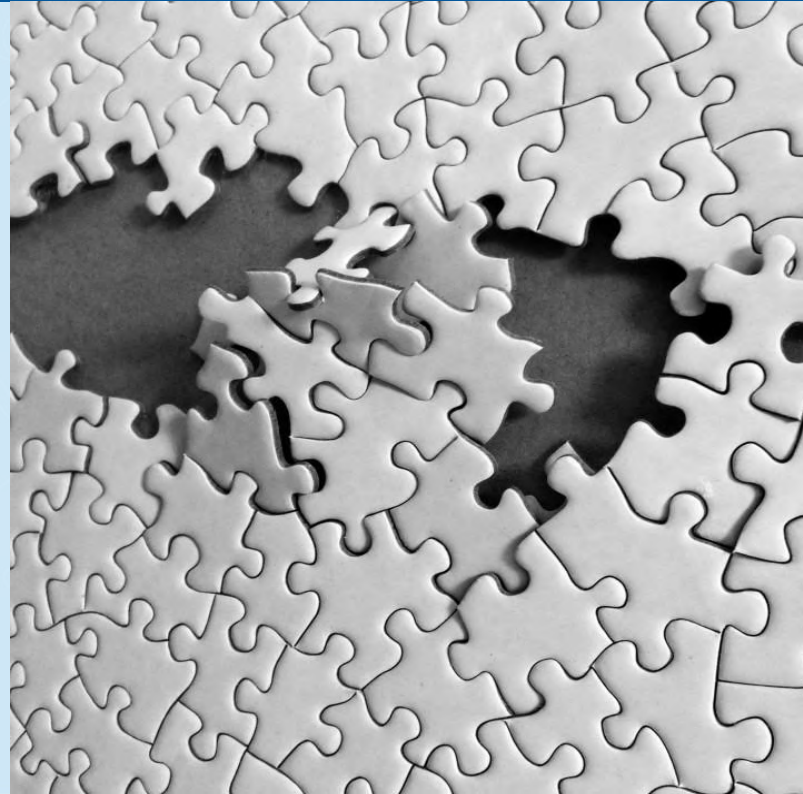


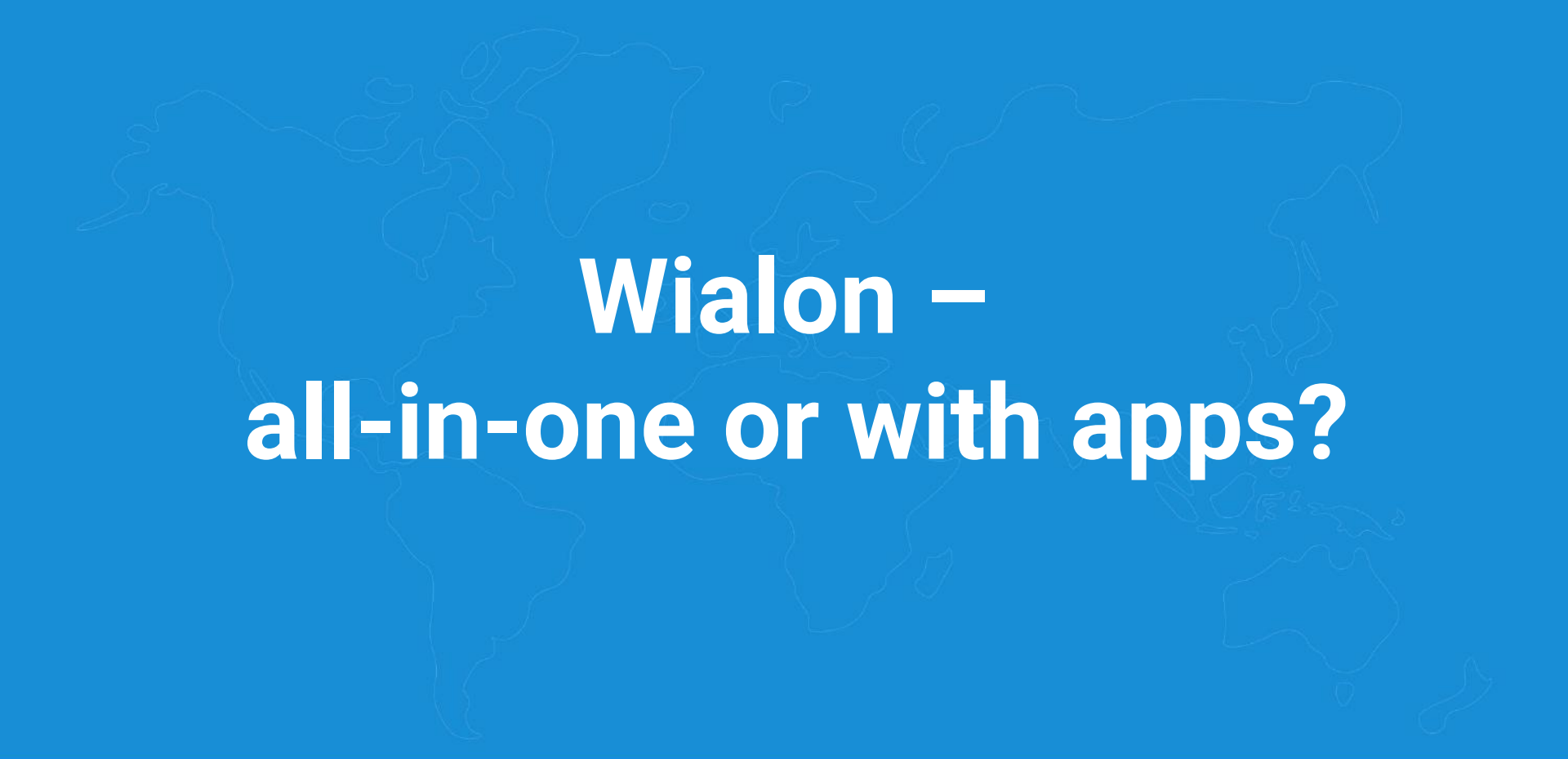


Niche solutions: perspectives from within

Why it's not easy to work on Wialon?

- ◆ Responsibility to the customers
- ◆ Further complication of the system
- ◆ Various regions – different requirements

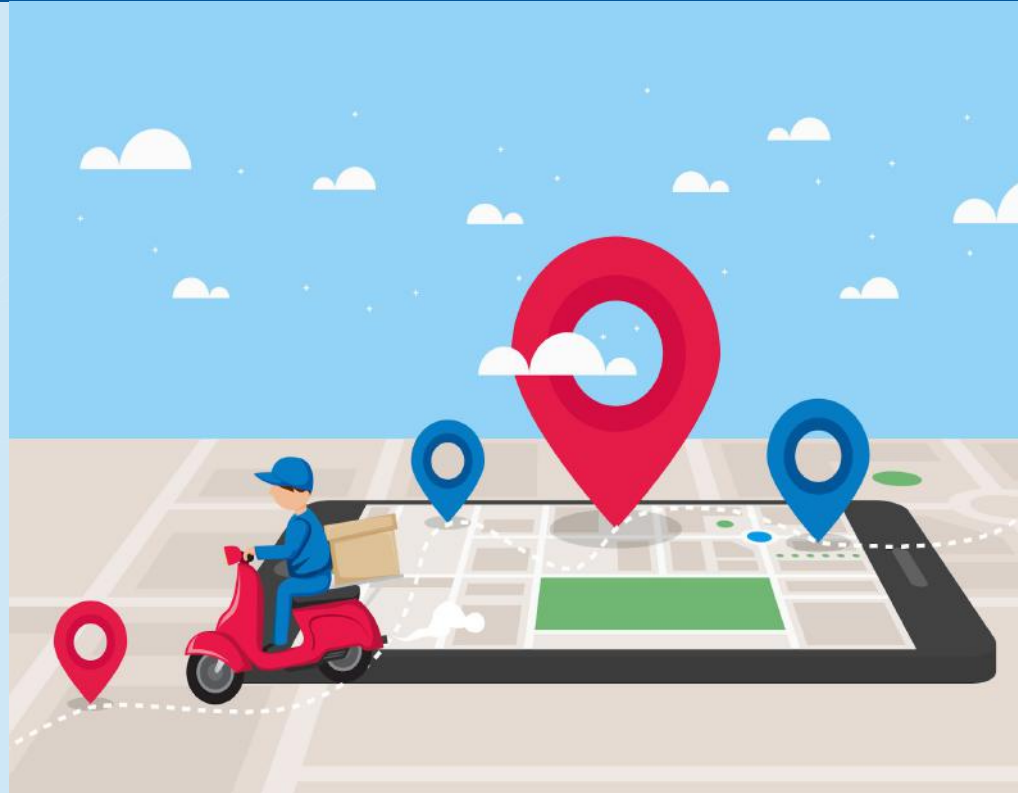




Wialon – all-in-one or with apps?

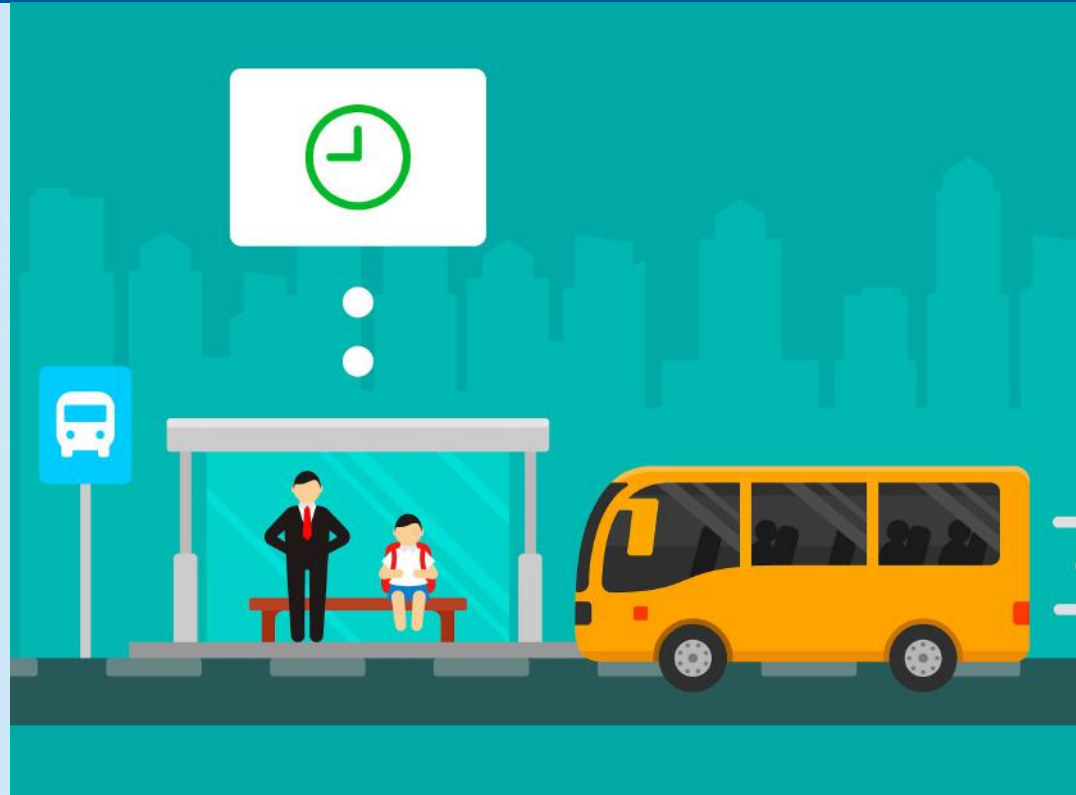
Logistics

- ◆ **Maps providers**
- ◆ **Routes refinements**
 - Bulk operations
 - Unit changing
 - Templates
- ◆ **Optimization of the distribution of orders**
- ◆ **Compatibility with Wialon Local**



NimBus

- ◆ Blocks (chains of rides)
- ◆ Locator for passengers
- ◆ Integration with displays on stops
- ◆ Compatibility with Wialon Local 1804



What we have learned

Product expertise

You can't release a successful product without immersion into domain area

We start development only when we are really ready for it

Lifespan of an app

An app starts bringing money only years after the first release

Join testing and share your ideas as early as possible

New Wialon apps

App for Maintenance

- ◆ Services and service intervals
- ◆ Operating costs accounting
- ◆ Dashboard with current fleet information
- ◆ Reports



App for Agriculture

Gathering requirements
for a specialized solution in
agricultural sector: telematic
control of the whole cycle of
cultivation of crops



Have an idea? Come to our workshops then!



Maintenance

15 August
15:00 - 16:20

16 August
17:00 - 18:20



Agriculture

15 August
16.40 - 18.00



NimBus

16 August
15:20 - 16:40



Thank you for your attention!