

# Video Solutions in Wialon

<https://gurtam.com/en/gps-hardware/video>

# Streamax X3-H0402 (N9M protocol)

## Streamax X3-H0402 → Wialon:

- ◆ GPS data
- ◆ Video files

## Wialon → Streamax X3-H0402:

- ◆ Video files requests

## Wialon ↔ Streamax RTMP-service:

- ◆ Live video

## Video files storage:

- ◆ Wialon Data Center



# Hero ME-41-04. Howen Technologies

## Hero ME-41-04 → Wialon:

- ◆ GPS data
- ◆ Video files

## Wialon → Hero ME-41-04:

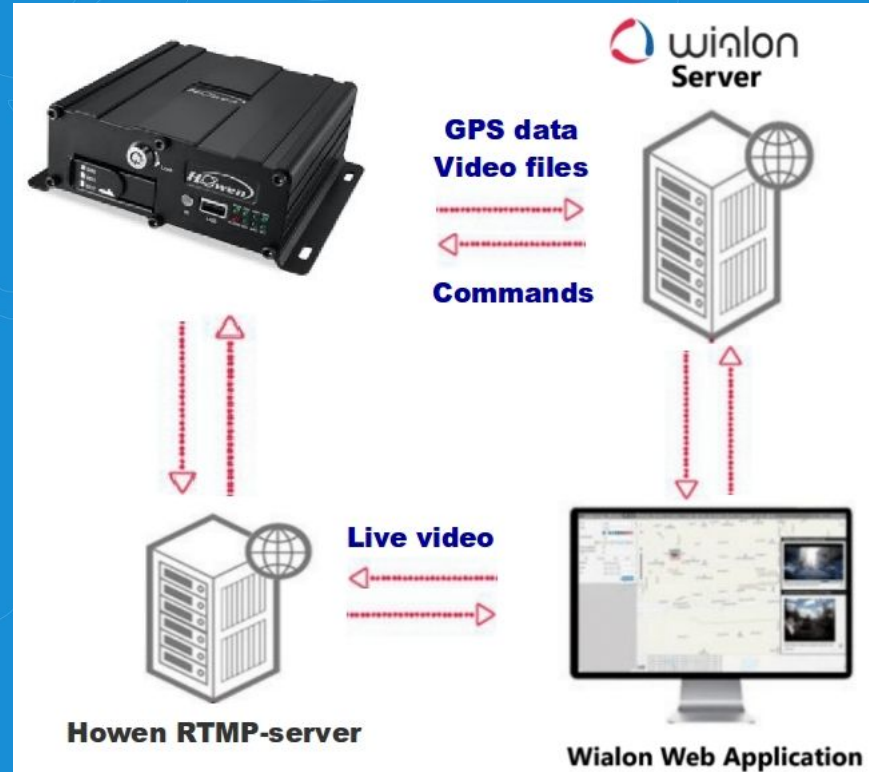
- ◆ Video files requests

## Wialon ↔ Howen RTMP server:

- ◆ Live video

## Video files storage:

- ◆ Wialon Data Center



# SerVision IVG400-N

## IVG400-N → Wialon:

- ◆ GPS data
- ◆ Event notifications

## Wialon → SVDDownloader:

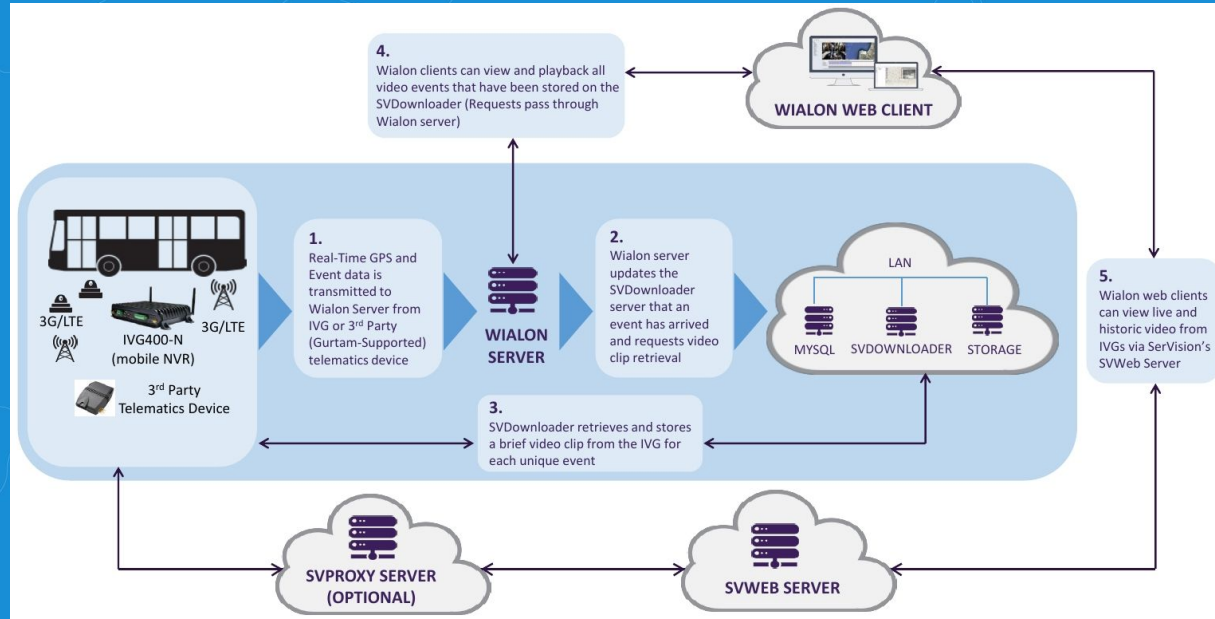
- ◆ Event video auto-requests
- ◆ Video requests

## Wialon → SVWeb server:

- ◆ Live video

## Video files storage:

- ◆ SVDDownloader



# SmartWitness Gateway

## Push service:

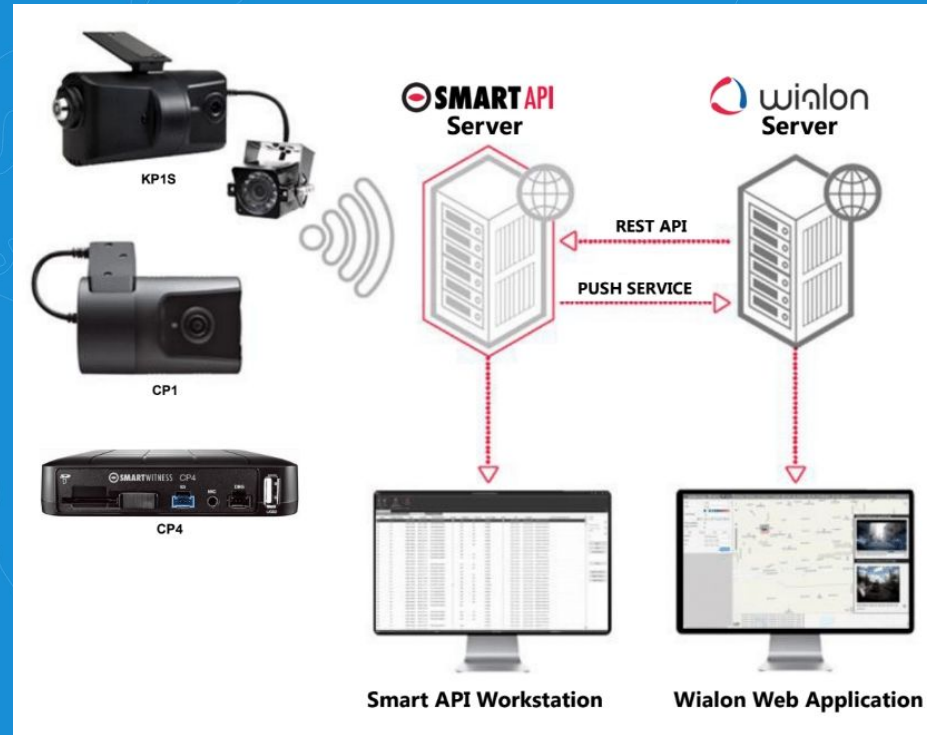
- ◆ Live track data
- ◆ Event notifications
- ◆ Event video clips

## Commands in Wialon (Rest API):

- ◆ Get latest available video
- ◆ Download video
- ◆ Make serverforce event

## Video storage:

- ◆ Cloud servers (SmartAPI cloud, Amazon)



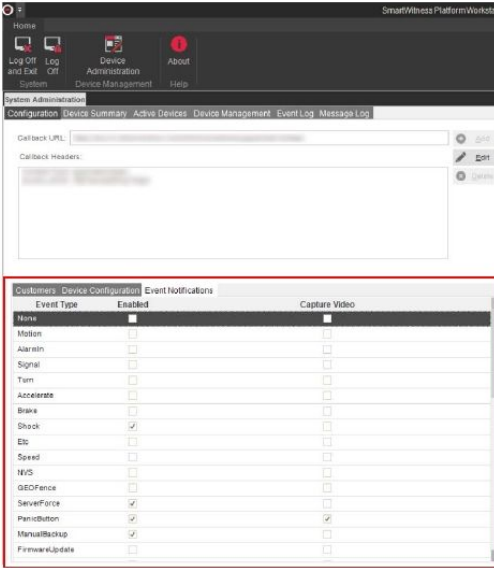
# SmartWitness Gateway Event Notifications Configuration

## The Smart API workstation:

- ◆ Device management
- ◆ OTA firmware & setting updates
- ◆ Troubleshooting

and

- ◆ Event Notifications Configuration

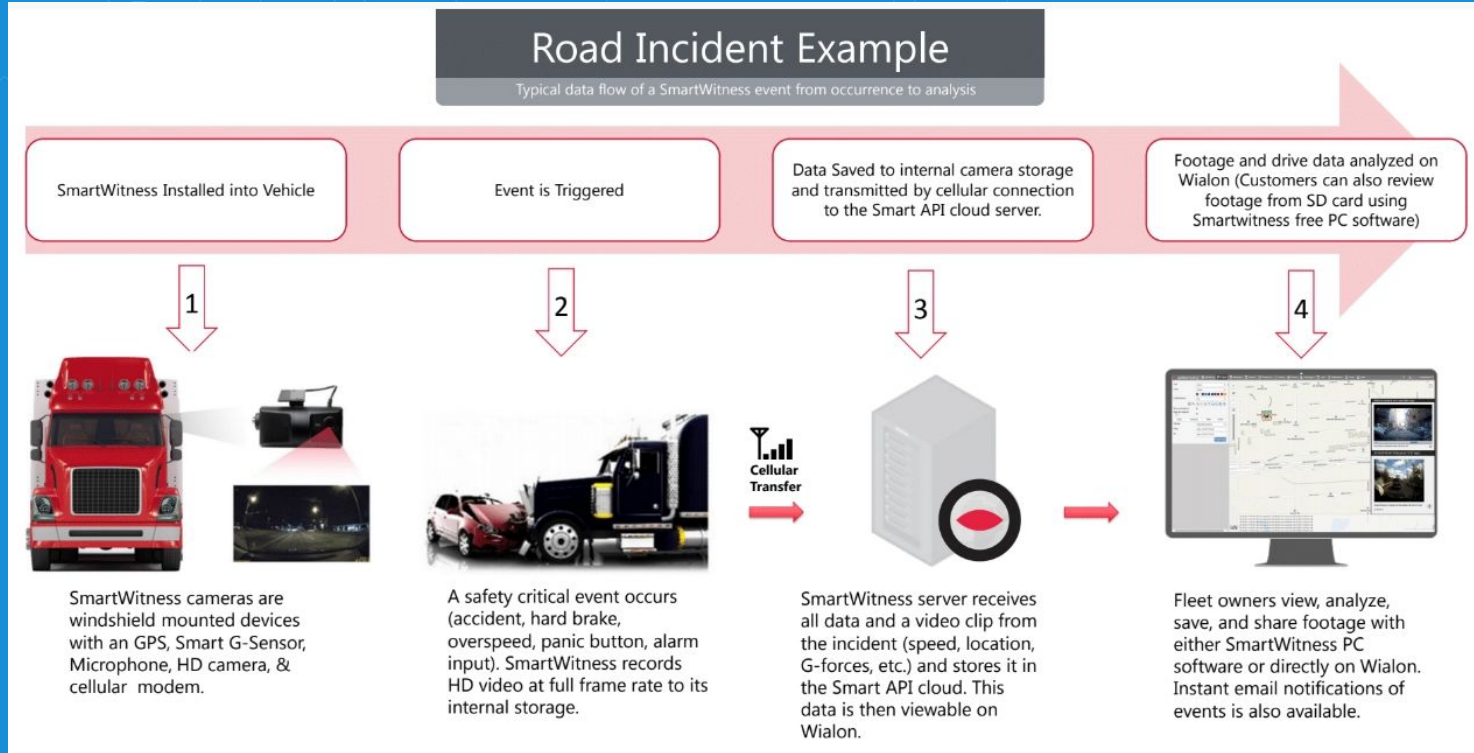


The screenshot shows the SmartWitness Platform Workstation interface. The top menu bar includes Home, Log Off, Log and Exit, Device Administration, and About. Below the menu, there are tabs for Configuration, Device Summary, Active Devices, Device Management, Event Log, and Message Log. The main area displays fields for Callback URL and Callback Headers. A red box highlights the 'Event Notifications' configuration window, which is a table with columns for Event Type, Enabled, and Capture Video.

Event Type	Enabled	Capture Video
None	<input type="checkbox"/>	<input type="checkbox"/>
Motion	<input type="checkbox"/>	<input type="checkbox"/>
AlarmIn	<input type="checkbox"/>	<input type="checkbox"/>
Signal	<input type="checkbox"/>	<input type="checkbox"/>
Turn	<input type="checkbox"/>	<input type="checkbox"/>
Accelerate	<input type="checkbox"/>	<input type="checkbox"/>
Brake	<input type="checkbox"/>	<input type="checkbox"/>
Shock	<input checked="" type="checkbox"/>	<input type="checkbox"/>
Etc	<input type="checkbox"/>	<input type="checkbox"/>
Speed	<input type="checkbox"/>	<input type="checkbox"/>
NVS	<input type="checkbox"/>	<input type="checkbox"/>
GEOFence	<input type="checkbox"/>	<input type="checkbox"/>
ServerForce	<input checked="" type="checkbox"/>	<input type="checkbox"/>
PanicButton	<input checked="" type="checkbox"/>	<input type="checkbox"/>
ManualBackup	<input checked="" type="checkbox"/>	<input type="checkbox"/>
FirmwareUpdate	<input type="checkbox"/>	<input type="checkbox"/>

Event Type	Description
AlarmIn	Alarm input trigger
Signal	Aux signal on (INT2 only)
Turn	Hard turn (g-sensor)
Accelerate	Quick Accel (g-sensor)
Brake	Hard brake (g-sensor)
Shock	Shock/Impact (g-sensor)
Etc	Not Used
Speed	Over speed
NVS	No Video Signal
GEOFence	Geofence event
ServerForce	"Make Event" command
PanicButton	Panic Button event
ManualBackup	Original video uploaded
FirmwareUpdate	Firmware was updated
SettingsBackup	Settings uploaded from device
SettingsUpdate	Settings updated to device
MediaFormat	SD card format success
GSensorCalibration	G-Sensor calibrated event
DeviceReboot	Device was rebooted
AlarmOutControl	Alarm-out was activated
DeviceUpdate	Workstation field values added/edited
NetConfigUpdate	Communication settings changed in
DeviceInitialized	Device connected to server
MediaError	SD card error detected
DeviceOffline	Device disconnected from server or network
DeviceOnline	Device disconnected to server or network
DeviceFault	Other device error
InstallationValidated	Installation Completed
LocationChanged	GPS location update
IgnitionOn	Ignition turned on
IgnitionOff	Ignition turned off

# SmartWitness Gateway Road Incident Example





# Thank you for your attention!