



Working with Drivers in Wialon

Anthony Franklin
Business Development Manager, North America

Agenda

- ❖ **Preparing Drivers for Assignment**
- ❖ **Binding Drivers to Vehicles**
- ❖ **Choosing the Best Way to Show Drivers on the Platform**

Overview of Driver Binding

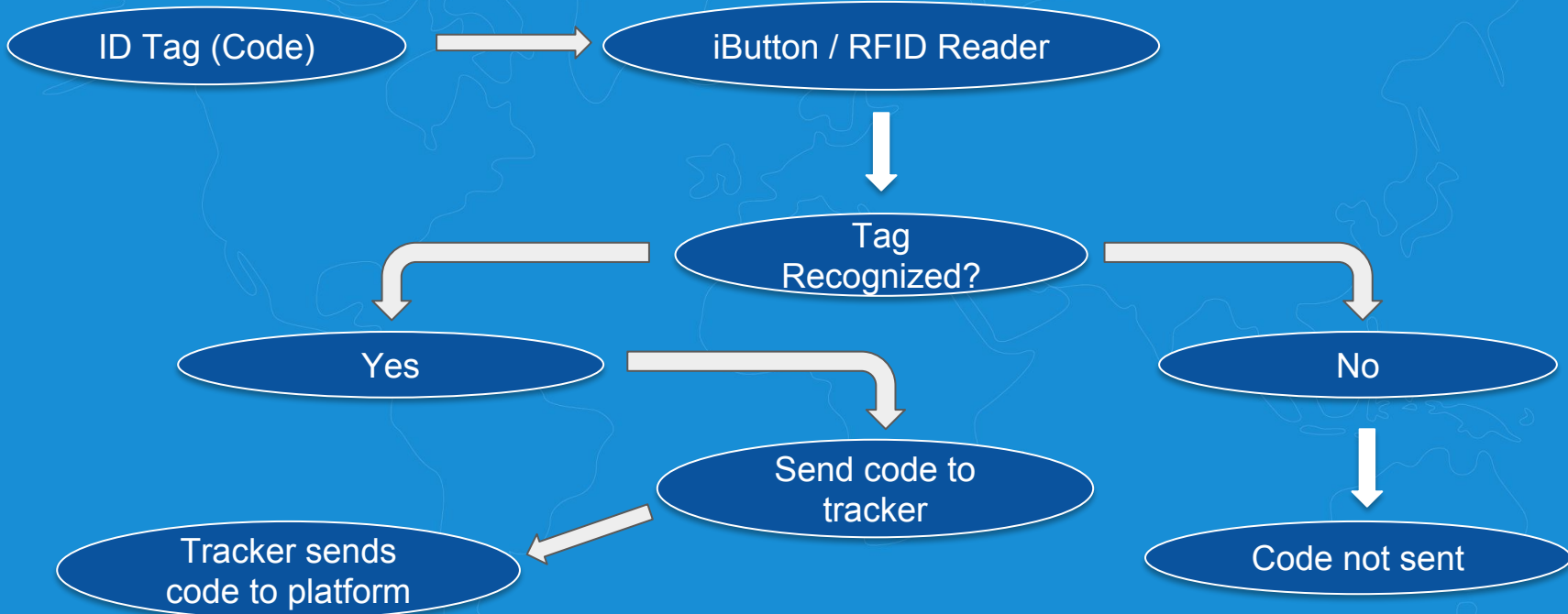
Manual Binding

- ❑ Create unit
- ❑ Create driver
- ❑ Bind driver

Automatic Binding

- ❑ Create unit
- ❑ Create driver + code
- ❑ Binding sensor
- ❑ Enable auto binding

Decision Tree



Preparing Drivers for Assignment

- Hardware setup
- Creating drivers w/ code
- Creating a binding sensor

Driver Properties – Jason Statham

Name: * Jason Statham

Code: 159354

Description:

Phone number:

Mobile key:

Exclusive: ?

Custom fields:

		+
Driver License	L34910B1	X
Shift	2nd	X

Cancel OK

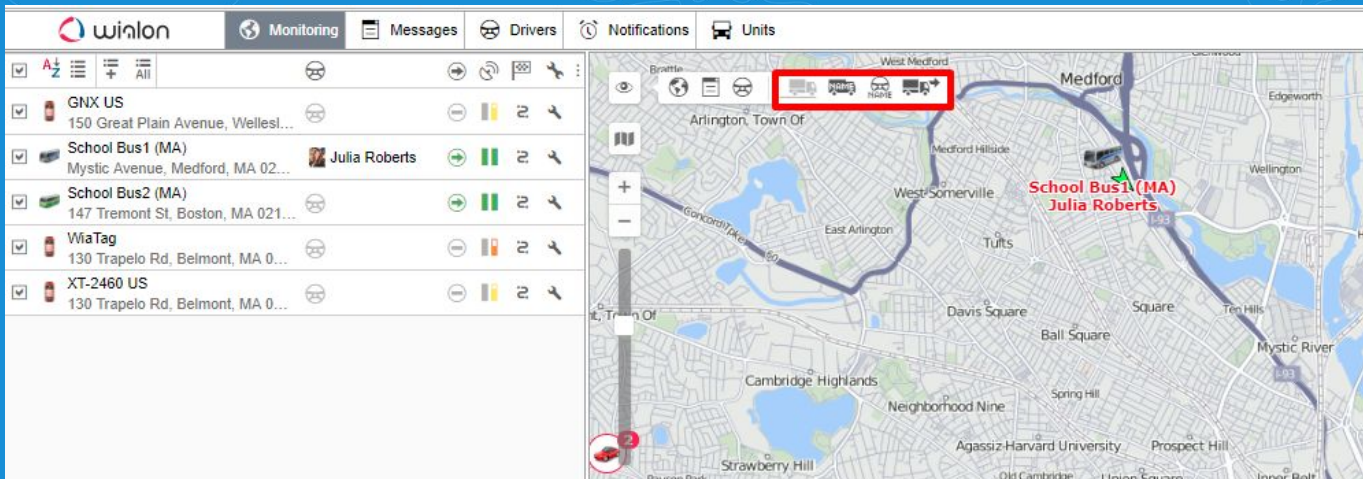
Binding Drivers to Vehicles

- Binding Types
- Reset Driver Notification Driver
- Managing Shifts

The screenshot displays the 'winlon' software interface. The top navigation bar includes 'winlon', 'Monitoring', 'Messages', 'Drivers', 'Notifications', and 'Units'. The 'Drivers' section is active, showing a list of drivers with columns for checkboxes, driver names, and action icons. A red box highlights the 'Automatic Binding' icon (a square with a plus sign) in the top left of the driver list, with a red arrow pointing to it and the text 'Automatic Binding'. Another red box highlights the 'Manual Binding' icon (a square with a plus sign) in the bottom right of the driver list, with a red arrow pointing to it and the text 'Manual Binding'. The map on the right shows a street view of an area including Lincoln, Silver Hill, and Weston.


Choosing the Best Way to Show Who is Driving

- Hide/show assigned driver on the map
- Display driver in tooltip
- Add the information in the monitoring panel



Summary

If you can't measure it, you can't improve it.
-Peter Drucker



THANK YOU!
Q/A!

Anthony Franklin
Business Development Manager, North America